

\mathbb{Z}^a , B

\mathbb{Z}^a , $\mathbb{Z}^{a,*}$, \mathbb{Z}^b , \mathbb{Z}^a , \mathbb{Z}^b

^a S B S U N C 501 20 S CB 92 G CO $80639-0017$, USA

^b U S G S M E S C F C CO $80525-3400$, USA

\mathbb{Z}^a \mathbb{Z}^b 2005 \mathbb{Z}^a \mathbb{Z}^b 2006

\mathbb{Z}^a \mathbb{Z}^b 20 \mathbb{Z}^a 2006

Abstract

\mathbb{Z}^a (B), \mathbb{Z}^a , \mathbb{Z}^b , \mathbb{Z}^a , \mathbb{Z}^b

a 1950a, b, c, d, e, f, g, h, i, j, k, l, m, n, o, p, q, r, s, t, u, v, w, x, y, z, aa, ab, ac, ad, ae, af, ag, ah, ai, aj, ak, al, am, an, ao, ap, aq, ar, as, at, au, av, aw, ax, ay, az, ba, bb, bc, bd, be, bf, bg, bh, bi, bj, bk, bl, bm, bn, bo, bp, bq, br, bs, bt, bu, bv, bw, bx, by, bz, ca, cb, cc, cd, ce, cf, cg, ch, ci, cj, ck, cl, cm, cn, co, cp, cq, cr, cs, ct, cu, cv, cw, cx, cy, cz, da, db, dc, dd, de, df, dg, dh, di, dj, dk, dl, dm, dn, do, dp, dq, dr, ds, dt, du, dv, dw, dx, dy, dz, ea, eb, ec, ed, ee, ef, eg, eh, ei, ej, ek, el, em, en, eo, ep, eq, er, es, et, eu, ev, ew, ex, ey, ez, fa, fb, fc, fd, fe, ff, fg, fh, fi, fj, fk, fl, fm, fn, fo, fp, fq, fr, fs, ft, fu, fv, fw, fx, fy, fz, ga, gb, gc, gd, ge, gf, gg, gh, gi, gj, gk, gl, gm, gn, go, gp, gq, gr, gs, gt, gu, gv, gw, gx, gy, gz, ha, hb, hc, hd, he, hf, hg, hh, hi, hj, hk, hl, hm, hn, ho, hp, hq, hr, hs, ht, hu, hv, hw, hx, hy, hz, ia, ib, ic, id, ie, if, ig, ih, ii, ij, ik, il, im, in, io, ip, iq, ir, is, it, iu, iv, iw, ix, iy, iz, ja, jb, jc, jd, je, jf, jg, jh, ji, jj, jk, jl, jm, jn, jo, jp, jq, jr, js, jt, ju, jv, jw, jx, jy, jz, ka, kb, kc, kd, ke, kf, kg, kh, ki, kj, kk, kl, km, kn, ko, kp, kq, kr, ks, kt, ku, kv, kw, kx, ky, kz, la, lb, lc, ld, le, lf, lg, lh, li, lj, lk, ll, lm, ln, lo, lp, lq, lr, ls, lt, lu, lv, lw, lx, ly, lz, ma, mb, mc, md, me, mf, mg, mh, mi, mj, mk, ml, mm, mn, mo, mp, mq, mr, ms, mt, mu, mv, mw, mx, my, mz, na, nb, nc, nd, ne, nf, ng, nh, ni, nj, nk, nl, nm, nn, no, np, nq, nr, ns, nt, nu, nv, nw, nx, ny, nz, oa, ob, oc, od, oe, of, og, oh, oi, oj, ok, ol, om, on, oo, op, oq, or, os, ot, ou, ov, ow, ox, oy, oz, pa, pb, pc, pd, pe, pf, pg, ph, pi, pj, pk, pl, pm, pn, po, pp, pq, pr, ps, pt, pu, pv, pw, px, py, pz, qa, qb, qc, qd, qe, qf, qg, qh, qi, qj, qk, ql, qm, qn, qo, qp, qq, qr, qs, qt, qu, qv, qw, qx, qy, qz, ra, rb, rc, rd, re, rf, rg, rh, ri, rj, rk, rl, rm, rn, ro, rp, rq, rr, rs, rt, ru, rv, rw, rx, ry, rz, sa, sb, sc, sd, se, sf, sg, sh, si, sj, sk, sl, sm, sn, so, sp, sq, sr, ss, st, su, sv, sw, sx, sy, sz, ta, tb, tc, td, te, tf, tg, th, ti, tj, tk, tl, tm, tn, to, tp, tq, tr, ts, tt, tu, tv, tw, tx, ty, tz, ua, ub, uc, ud, ue, uf, ug, uh, ui, uj, uk, ul, um, un, uo, up, uq, ur, us, ut, uu, uv, uw, ux, uy, uz, va, vb, vc, vd, ve, vf, vg, vh, vi, vj, vk, vl, vm, vn, vo, vp, vq, vr, vs, vt, vu, vv, vw, vx, vy, vz, wa, wb, wc, wd, we, wf, wg, wh, wi, wj, wk, wl, wm, wn, wo, wp, wq, wr, ws, wt, wu, wv, ww, wx, wy, wz, xa, xb, xc, xd, xe, xf, xg, xh, xi, xj, xk, xl, xm, xn, xo, xp, xq, xr, xs, xt, xu, xv, xw, xx, xy, xz, ya, yb, yc, yd, ye, yf, yg, yh, yi, yj, yk, yl, ym, yn, yo, yp, yq, yr, ys, yt, yu, yv, yw, yx, yy, yz, za, zb, zc, zd, ze, zf, zg, zh, zi, zj, zk, zl, zm, zn, zo, zp, zq, zr, zs, zt, zu, zv, zw, zx, zy, zz.

a) $a^2 + a^2 = 2a^2$ ($a > 1500$). $a^2 = a^2$. B.
 (1) $a^2 = a^2$. B. ($a^2 = a^2$)
 ba) $a^2 = a^2$.

2.3. P. $a^2 = a^2$

$a^2 = a^2$ ($a^2 = a^2$)
 (1976) $a^2 = a^2$ b) $a^2 = a^2$, b)
 ra) $a^2 = a^2$ b) $a^2 = a^2$
 a) $a^2 = a^2$ a) $a^2 = a^2$ b) $a^2 = a^2$
 $a^2 = a^2$.

2.4. E. $a^2 = a^2$

$a^2 = a^2$ a) $a^2 = a^2$ a) $a^2 = a^2$
 a) $a^2 = a^2$ a) $a^2 = a^2$ a) $a^2 = a^2$
 342/ $a^2 = a^2$ a) $a^2 = a^2$
 4- a) $a^2 = a^2$ a) $a^2 = a^2$ b) $a^2 = a^2$
 b) ($a^2 = a^2$), a) ($a^2 = a^2$),
 a) ($a^2 = a^2$), a) ($a^2 = a^2$), a) ($a^2 = a^2$),
 a) ($a^2 = a^2$), a) ($a^2 = a^2$), a) ($a^2 = a^2$),
 (b) ($a^2 = a^2$), a) ($a^2 = a^2$)
 (a) $a^2 = a^2$ 63/ $a^2 = a^2$ 50 0-1. () 995.4 276245/ $a^2 = a^2$)-421.5(977)-220.44b 67/ $a^2 = a^2$ 251.54b $a^2 = a^2$.

100 a a 5.0 a 2 (6.8). , a a
 A_s (250 μ) A_s a A_s a
 aa 2000 A_s A_s (10×
 300)a a a 0.3 / , a b
 (a) a a a A_s a a ,
 L a .

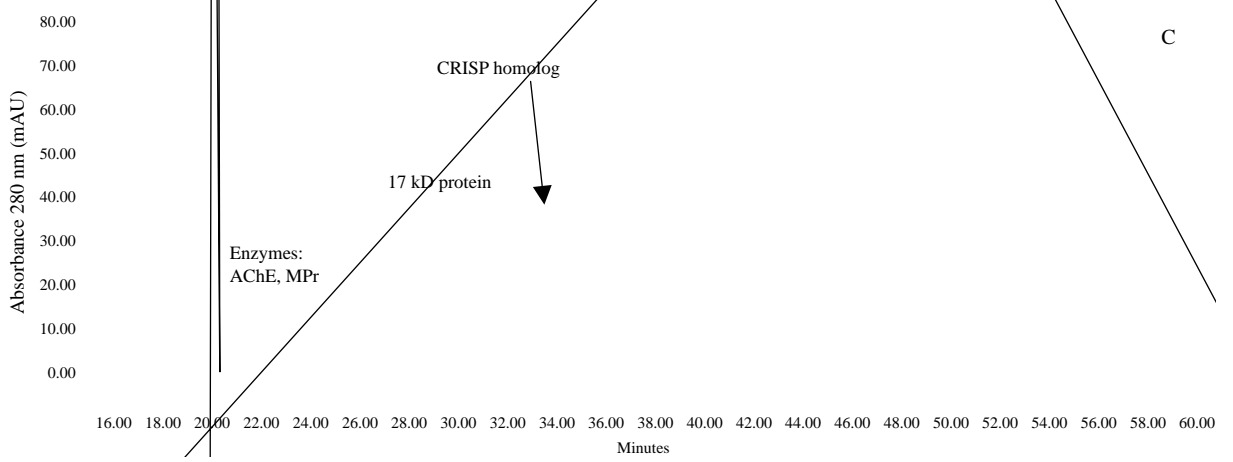
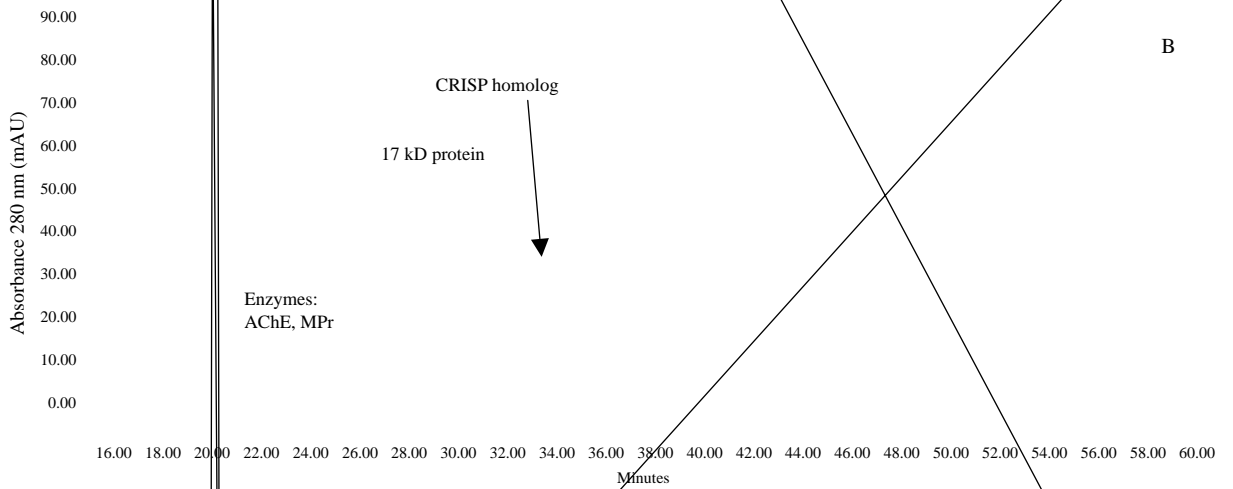
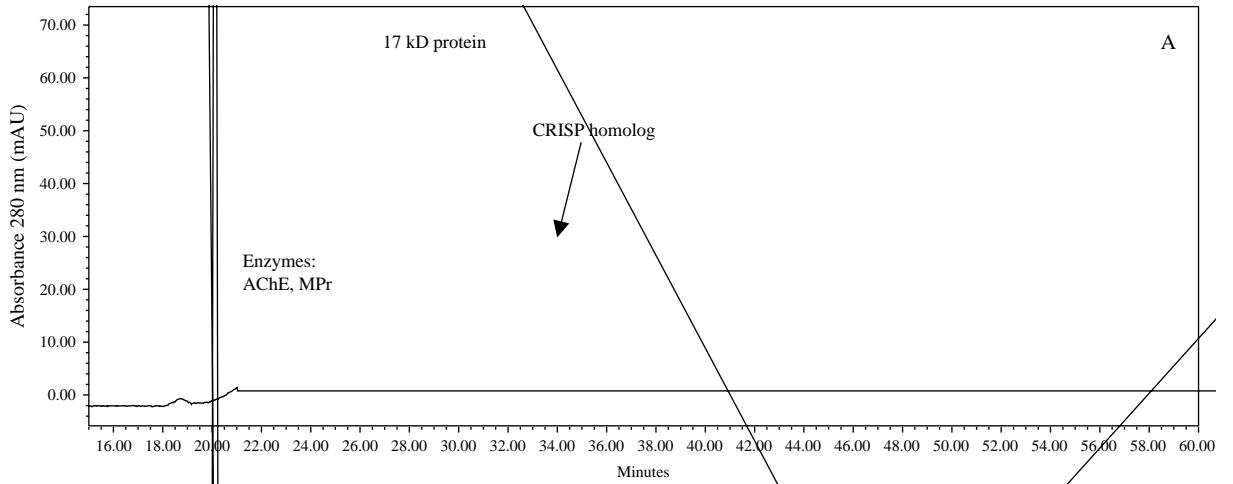
2.9. MALDI-TOF

A_s a 0.5 μ A_s B.
 (a a a ; a - a) a a
 0.5 μ a A_s a a a
 b A_s a a a a a
 a a a (A_s) a a -
 a a a a a a a a
 5 15 a .

2.10. Tx

a A_s A_s a a a a
 A_s (H (, ,) ba a
 a a (C (,) A_s A_s a A_s A_s
 (G (,) ba a a b a a
 A_s A_s (M (,) b a a a
 A_s a a a a a a
 a a a a a a a
) a -677.77 9(248.5(65(-11.60)-)095 266 70A_s ((a)-52-526.6(a-523.9(-)7 13.1(a 23.90.5(-)6)-4

$\int \int_{\Delta} \int_a \dots \int_{\Delta} \int_b \dots$



... 2000. $a \dots a$
 () $b \dots a$
 $a \dots a$ 38, 1663
 1687.

... 1996 $a \dots a$
 $a \dots a$ 2. 34, 1149 1155.

... 2004. $a \dots a$
 $a \dots a$ 2 () $a \dots a$
 $a \dots T$ ($a \dots b$) . 44, 27 36.

... 2001. $a \dots a$ $a \dots a$. 55, 409 417.

... 1976 $a \dots a$
 $L \dots a \dots a$ (B) . 14, 307 312.

... 2004. $a \dots a$
 $L \dots a \dots a$ $b \dots a$ $a \dots a$
 $a \dots a$ 43, 819 827.

... 2004b. $a \dots a$ $a \dots a$ $a \dots a$
 B ($a \dots a$) . 24, 107 113.

... 2005. $a \dots a$ $a \dots a$ $a \dots a$
 B ($a \dots a$) . 45, 329 334.

... 1988. $a \dots a$ $a \dots a$
 C $a \dots a$ 1988, 92 101.

... 1993. $a \dots a$ $b \dots a$
 $a \dots a$ $a \dots a$
 (C) . $a \dots a$ 2, 223 239.

... 1998. $a \dots a$ $b \dots a$
 $a \dots b$ $a \dots a$: $a \dots$ (a) , $a \dots$
 $a \dots a$ $a \dots a$. 361 404.

... 2002. $a \dots a$ $a \dots a$ $b \dots a$
 $a \dots a$. 21, 43 83.

... 2003. $a \dots a$
 $a \dots a$ $a \dots a$ C $a \dots a$,
 $a \dots a$ $a \dots a$ $a \dots a$ 2003, 769
 782.

... 2001. $a \dots a$ $a \dots a$. 39, 87 96.

... 2002. $a \dots a$ (a) , $a \dots a$ $a \dots a$
 $a \dots a$, $a \dots a$ $a \dots a$. 516.

... 1998. $a \dots a$ $a \dots a$
 $a \dots a$ $a \dots a$ $a \dots a$ $a \dots a$
 $a \dots b$ $a \dots a$. 119 ,
 119 127.

... 1979. $a \dots a$
 $a \dots a$ $a \dots a$ $a \dots a$ $a \dots a$ $a \dots a$. 96, 151 158.

... 1938 $a \dots a$ $a \dots a$
 $a \dots a$ $a \dots a$. 27, 493 497.

... 1993. $a \dots a$ $a \dots a$
 $a \dots a$ $b \dots a$ B
 ($a \dots a$: $b \dots a$) . $a \dots a$ 49, 297 300.