

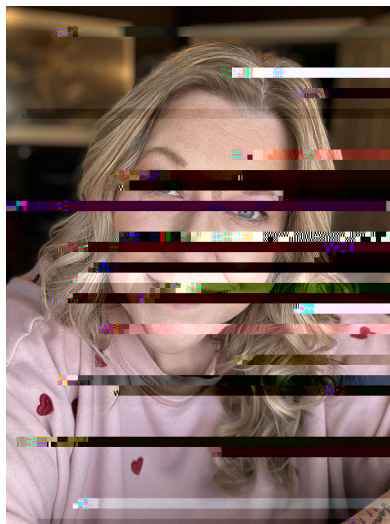


CCRE Stipends Help Rural School Districts Attract Teachers

By Shannon Wilde

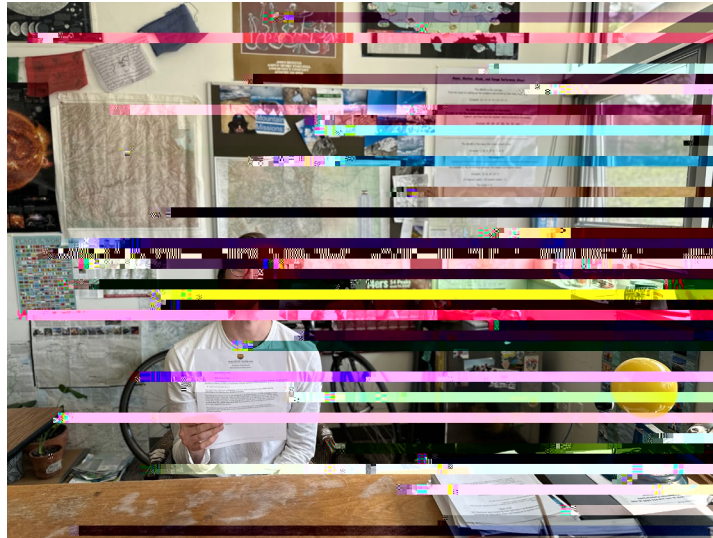
Stipends offered by the Colorado Center for Rural Education (CCRE) are helping rural school districts attract and retain teachers, according to a new report from the organization.

Shannon Wilde



VY'hc'VY'U''ZY'cb[''YUfbYfz'UbX'h']g'gh'dYbX'U'`ck g'a Y'hc'`dfUW'W'k \Uh'`dfYUW'`hc'a m'gri XYbhg'

Kevin Cronin



h']b[g'UbX'Udd'n]b['h'Ya ']b'a m'WUggfcca "' W'Ub h'h'Ub_'h'Y'7c'cfUXc'7YbhYf'Zcf'Fi fU'9Xi W'h]cb' Ybci [\Zcf'cdYb]b['h']g'Xccf'Zcf'a Y"' 'k ci 'Xb h'Uj Y'VYYb'UV'Y'hc'U'hY'bX'[fUXi Uh'gW'cc''

Heidy Cardenas



Hannah Hohenstein



[National Board Certified Teacher Stipend](#)

[Rural Inservice Educator Stipend](#)

[Colorado Rural Student Teaching Stipend](#)

[Colorado Substitute Stipend](#)

[Financial Aid and Scholarship Information](#)

[Colorado Department of Education's Educator Recruitment and District Supports for](#)

Featured Partners



[K YghYfb'7c'cfUXc'l b\]j Yfg\]hmc Yfg'U'\\$\\$\\$i](#)